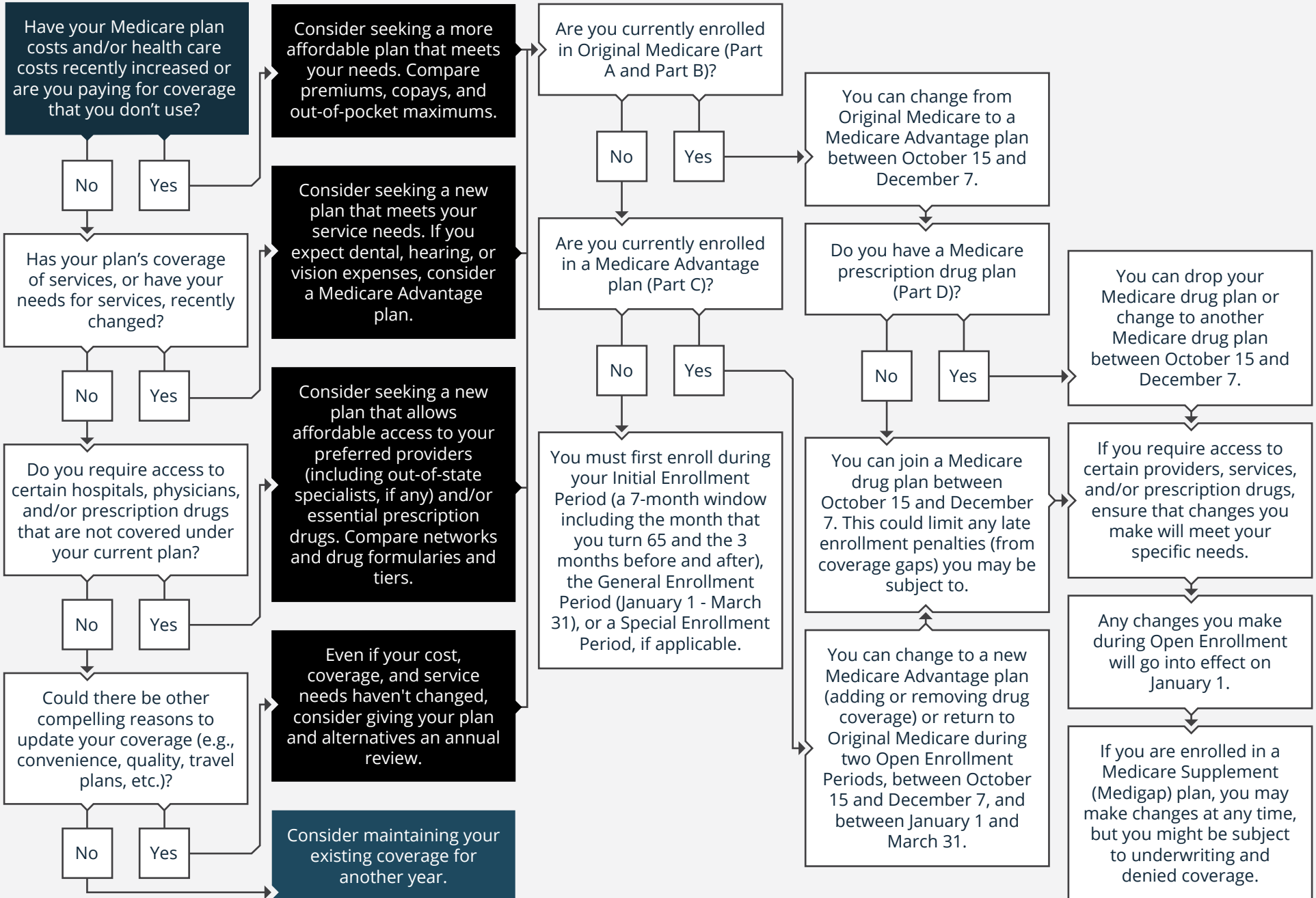


2023 · SHOULD I CHANGE MY MEDICARE COVERAGE DURING OPEN ENROLLMENT?



This material was prepared by fpPathfinder and does not necessarily represent the views of the presenting party, nor their affiliates. This information has been derived from sources believed to be accurate. Please note – investing involves risk, and past performance is no guarantee of future results. The publisher, Fero Financial, or LPL are not engaged in rendering tax, legal, accounting or other professional services. If assistance is needed, the reader is advised to engage the services of a competent professional. This information should not be construed as investment, tax or legal advice and may not be relied on for the purpose of avoiding any Federal tax penalty. This is neither a solicitation nor recommendation to purchase or sell any investment or insurance product or service, and should not be relied upon as such.

Securities offered through LPL Financial, Member FINRA/SIPC. Advisory services offered through IFG Advisory, LLC, a registered investment advisor, Member FINRA/SIPC. Fero Financial and IFG Advisory, LLC are separate entities from LPL Financial.

Rebekah Fero, CFP®, AIF®, CERTIFIED FINANCIAL PLANNER™ Professional & Accredited Investment Fiduciary ®

17843 Murdock Circle Unit 7B Port Charlotte, FL 33948
rebekah.fero@lpl.com | 941.625.5811 | <https://www.ferofinancial.com/>